



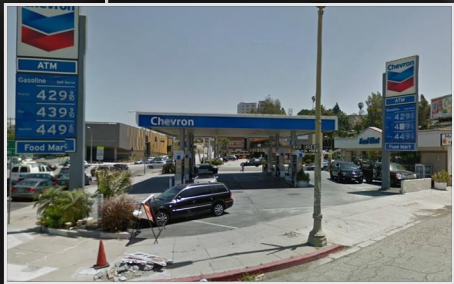
See the Virtual Tour!

www.tourfactory.com/1014541

\$3,500,000



CONFIDENTIAL PRIVATE SALE



Chevron Station Prime Real Estate LA! Los Angeles, CA | MLS

- Chevron Gas Station Food Mart & Land!
- Location Location Location!
- Literally In The Heart Of Los Angeles!
- Extremely Heavy Traffic Intersection!
- One Block From Major Freeway!
- Very Convenient Location!

- Location: Central Los Angeles, CA
- Asking Price: \$3,500,000
- Annual Gross: Call Broker
- Annual Net: Call Broker
- Year Established: 1999
- Employees: 5 Full Time
- Real Estate: \$3,250,000 [2012 Assessed]
- Rental Income: \$6,500 Per Month
- Confidential Private Sale!

George Massalas
800-727-2100 [Option 1]
chris@bizbuilder.com
BIZ Builder.Com



5394 Seneca Place, Simi Valley, California 93063



EQUAL HOUSING OPPORTUNITY | Information deemed reliable but not guaranteed



DRE # 01852885 / 01871760